



Solvin polyvinyl chloride

Solvin 374MB

TYPE

Polyvinyl chloride made by emulsion polymerisation for plastisol preparation.

MAIN APPLICATIONS

Spread coating :

- artificial leather compact layer
- artificial leather foam layer
- tarpaulins.

Moulding and dipping.

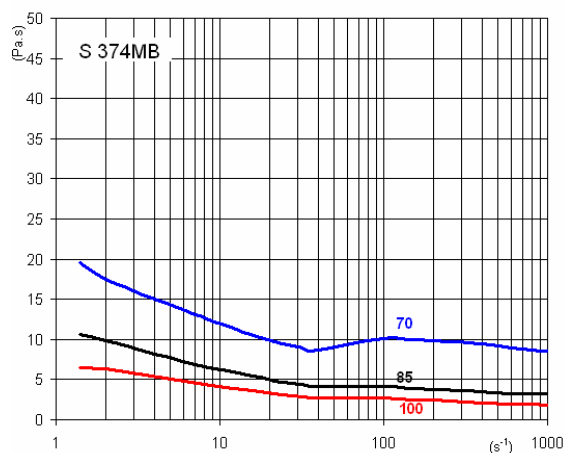
Spraying :

- automotive sealants .

ADVANTAGES

- Long experiences in outdoor applications .
- Good viscosity stability on storage.

VISCOSITY CURVES



Paste preparations with 70 phr DEHP, 85 phr DEHP and 100 phr DEHP.

Readings were made 1 h after preparation at 23 °C with rotating and capillary viscosimeters.

CHARACTERISTICS	UNITS	VALUES	TEST METHODS
K value		74	ISO 1628-2
Sieve analysis : - retained on 0.125 mm sieve	g/kg	≤ 0.15	ISO 787-18
Volatile content	%	≤ 0.3	ISO 1269

The data and numerical results contained in this document are provided for the sake of general information of our customers and are given in good faith. The numerical data and tables of results show typical average data based on an appropriate number of individual measurements made on the products. They cannot be considered as specifications. Our responsibility does not cover misuse of our products. The information presented here cannot be considered as a suggestion to use our products without taking into account existing patents, or legal provisions or regulations, whether national or local.

© 2003, SolVin S.A.



Version of July 2003

© Registered trade- mark.