



# Solvin polyvinyl chloride

## Solvin 372NF

### TYPE

Polyvinyl chloride made by microsuspension polymerisation for plastisol preparation.

### MAIN APPLICATIONS

#### Spread coating :

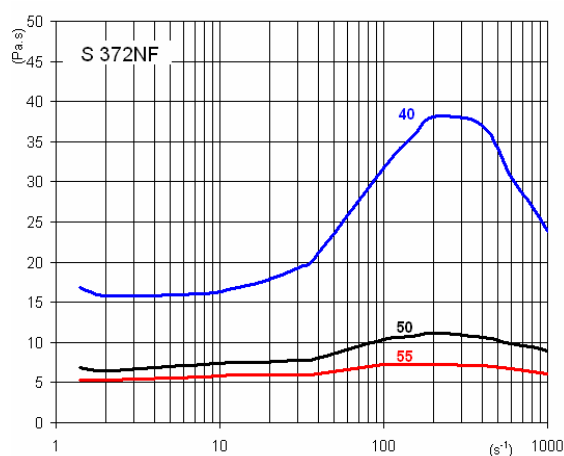
- artificial leather compact layer
- artificial leather foam layer
- flooring top coat
- flooring foam layer
- flooring impregnation layer
- flooring backing foam
- wall covering compact layer
- tarpaulins
- coil coating.

#### Moulding and dipping.

### ADVANTAGES

- High filler acceptance.
- Not sticking over a wide temperature range on a pregelation drum.

### VISCOSITY CURVES



Paste preparations with 40 phr DEHP, 50 phr DEHP and 55 phr DEHP.

Readings were made 1 h after preparation at 23 °C with rotating and capillary viscosimeters.

| CHARACTERISTICS                                  | UNITS | VALUES | TEST METHODS |
|--|-------|--------|--------------|
| K value  |       | 72     | ISO 1628-2   |
| Sieve analysis :<br>- retained on 0.125 mm sieve | g/kg  | ≤ 0.2  | ISO 787-18   |
| Volatile content                                 | %     | ≤ 0.3  | ISO 1269     |

*The data and numerical results contained in this document are provided for the sake of general information of our customers and are given in good faith. The numerical data and tables of results show typical average data based on an appropriate number of individual measurements made on the products. They cannot be considered as specifications. Our responsibility does not cover misuse of our products. The information presented here cannot be considered as a suggestion to use our products without taking into account existing patents, or legal provisions or regulations, whether national or local.*

© 2003, SolVin S.A.



Version of June 2003

© Registered trade- mark.